



Hard Chess Puzzle # 0112

By

G Bud Games
<https://gbud.in>

January 21, 2022

Contents

Hard Chess puzzle # 0112 - Mate in 3 moves	4
Hard chess puzzle 0112	4
Solution to hard chess puzzle 0112	5
Solution 1	5
Solution 2	8
Right moves for the solution to the hard chess puzzle 0112	11
Explanation for the moves	11
Categories of hard chess puzzle 0112	12
hard chess puzzle 0112 chart	12
How to view the solution to hard chess puzzle 0112	14
How to get help for moves in the hard chess puzzle 0112	15
Play chess for free	16

List of Figures

1	Solve this hard chess puzzle 0112. Mate in 3 moves @ https://gbud.in/gyq26r3	4
2	Solve this hard chess puzzle online with solution @ https://gbud.in/gyq26r3	4
3	Initial board position of hard chess puzzle 0112	5
4	Rc1+	6
5	Kb7	6
6	Rb3+	7
7	Ka8	7
8	Rb8#	8
9	Initial board position of hard chess puzzle 0112	8
10	Rc1+	9
11	Kb7	9
12	Rb3+	10
13	Ka8	10
14	Rc8#	11
15	hard chess puzzle 112 chart 1	12
16	hard chess puzzle 112 chart 2	13
17	hard chess puzzle 112 chart 3	13
18	hard chess puzzle 112 chart 4	14
19	Click the solution button to view solutions @ https://gbud.in/gyq26r3	14

20	Click the help button to get help on next move @ https://gbud.in/gyq26r3	15
21	Solve more hard puzzles @ https://gbud.in/chshdpz	15
22	Solve other puzzles @ https://gbud.in/chsgppz	15
23	Play chess online for free. Solve puzzles and play with friends	16
24	Solve this puzzle online by scanning this QR code or go to the link below	17

Hard Chess puzzle # 0112 - Mate in 3 moves

Solve this hard chess puzzle and improve your chess games through improvement of your chess strategies and chess tactics. This hard puzzle is a subset of [kids games](#).

Puzzle No : 0112

Difficulty level : hard

Description : Mate in 3 moves

Next Move : White

Player level : Advanced

Short URL for puzzle : <https://gbud.in/gyq26r3>

Hard chess puzzle 0112

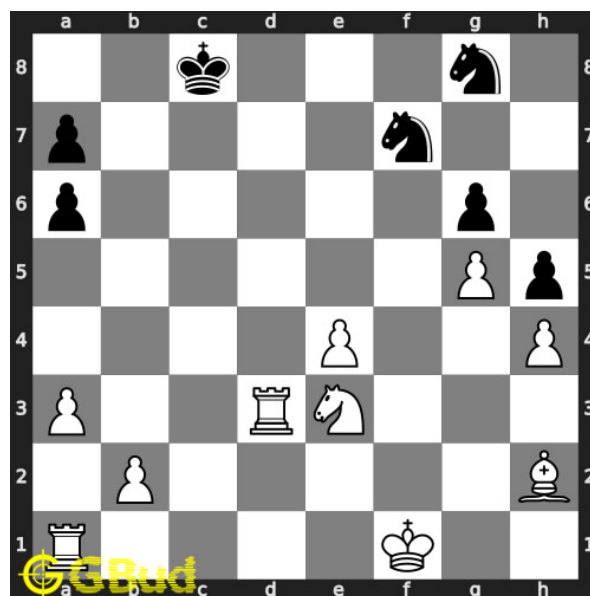


Figure 1: Solve this hard chess puzzle 0112. Mate in 3 moves @ <https://gbud.in/gyq26r3>



Figure 2: Solve this hard chess puzzle online with solution @ <https://gbud.in/gyq26r3>

Dont forget to check out [chess puzzles](#), [easy chess puzzles](#), [medium chess puzzles](#), [hard chess puzzles](#) and [chess puzzles collections](#) .

Solution to hard chess puzzle 0112

At this puzzle, next [move](#) is by [White](#). The objective of the puzzle is to mate in 3 moves.

See the interactive solution at the [puzzle page](#)

Solution 1

Initial board position This is the initial board position of hard chess puzzle 0112.

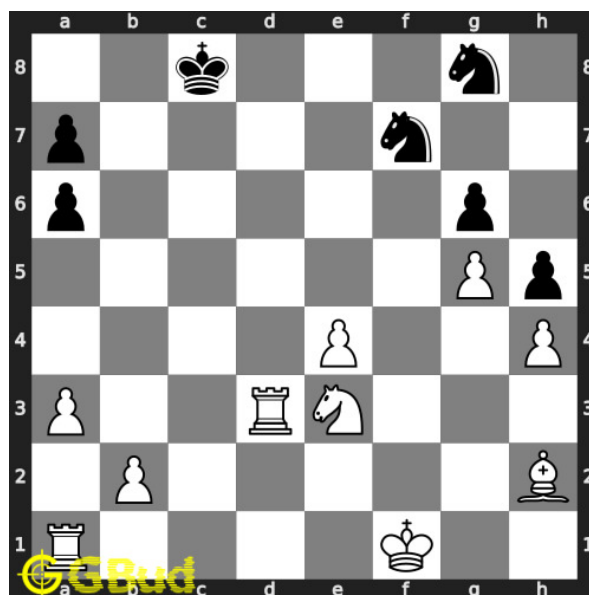


Figure 3: Initial board position of hard chess puzzle 0112

Move 1 Move by white

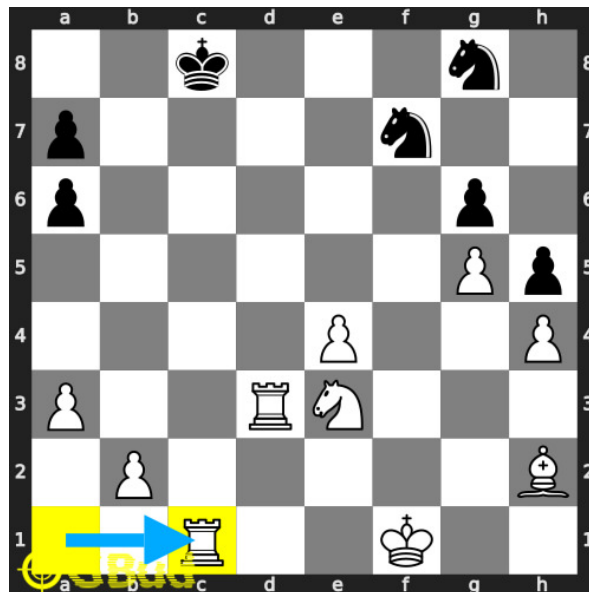


Figure 4: Rc1+

your **rook** in first **rank** moves to **c1** and gives **check** to opponent.

Move 2 Move by black

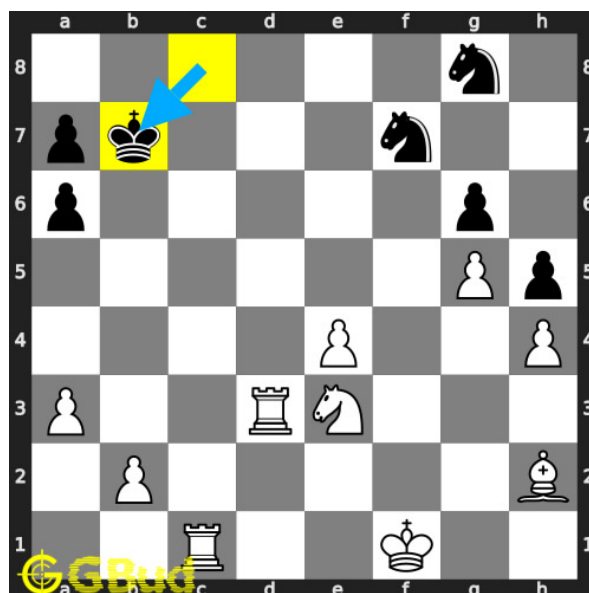


Figure 5: Kb7

opponent's **king** escapes from the **check** threat by moving to **b7**. it can't come to **b8** or **d file** due to the attack from your other **rook** and **bishop**.

Move 3 Move by white

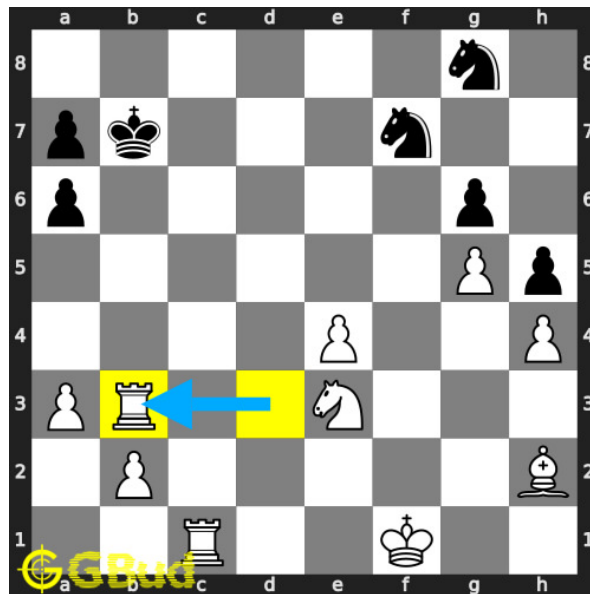


Figure 6: Rb3+

your **rook** in third **rank** gives next **check**.

Move 4 Move by black

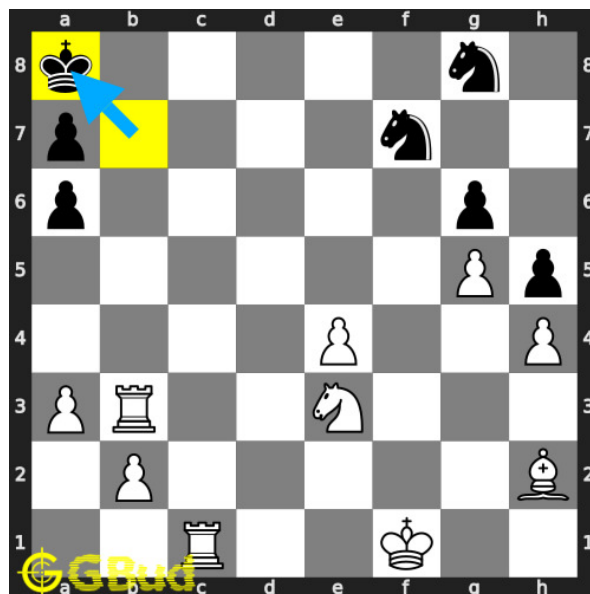


Figure 7: Ka8

opponent's **king** move to **a8** as this is the only free **square** available due to the block by friendly **pawns**.

Move 5 Move by white

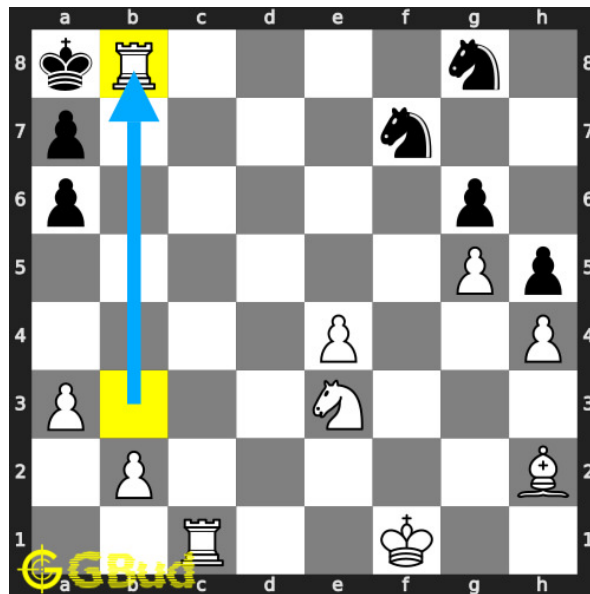


Figure 8: Rb8#

your **rook** in **b file** moves to **b8** and **checkmate**. opponent's **king** can't **capture** your **rook** since it is supported by **bishop**. this is how you can **mate** in **3 moves**.

Solution 2

Initial board position This is the initial board position of hard chess puzzle 0112.

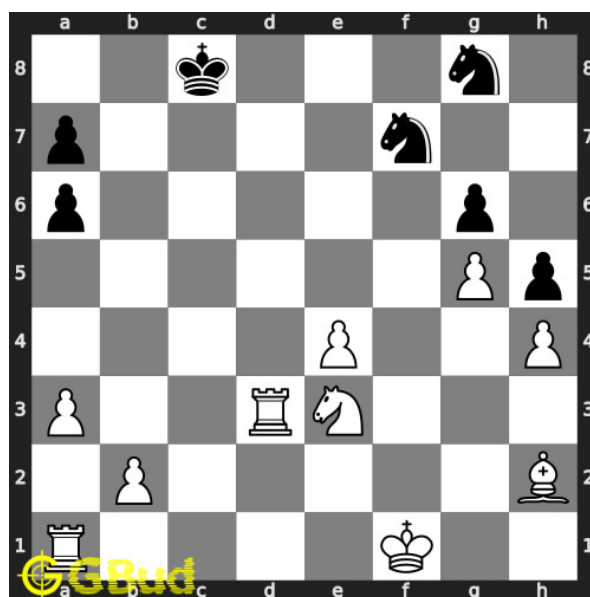


Figure 9: Initial board position of hard chess puzzle 0112

Move 1 Move by white

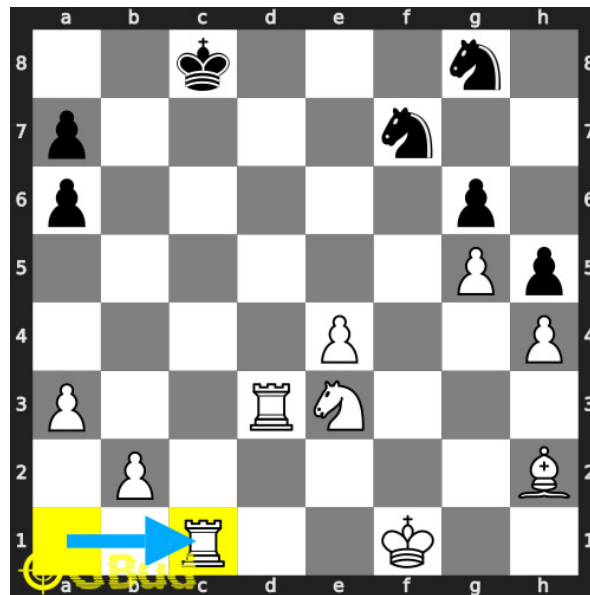


Figure 10: Rc1+

your **rook** in first **rank** moves to **c1** and gives **check** to opponent.

Move 2 Move by black

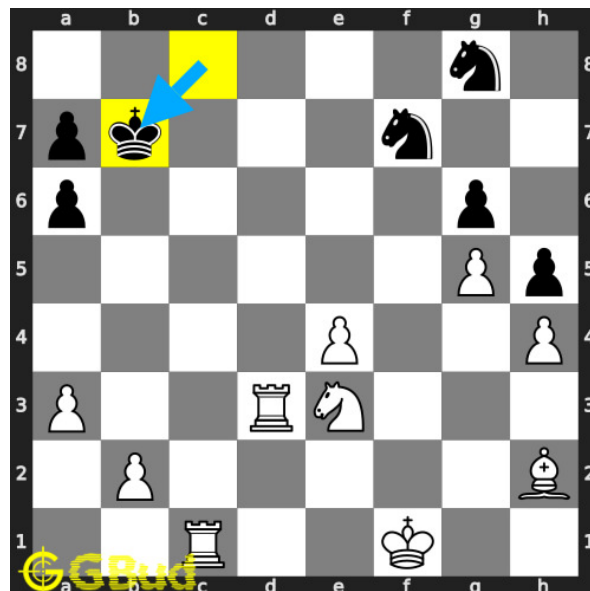


Figure 11: Kb7

opponent's **king** escapes from the **check** threat by moving to **b7**. it can't come to **b8** or **d** file due to the attack from your other **rook** and **bishop**.

Move 3 Move by white

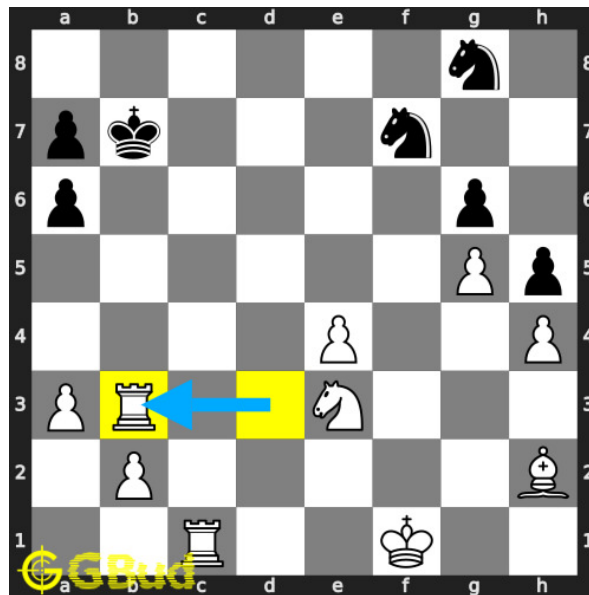


Figure 12: Rb3+

your **rook** in third **rank** gives next **check**.

Move 4 Move by black

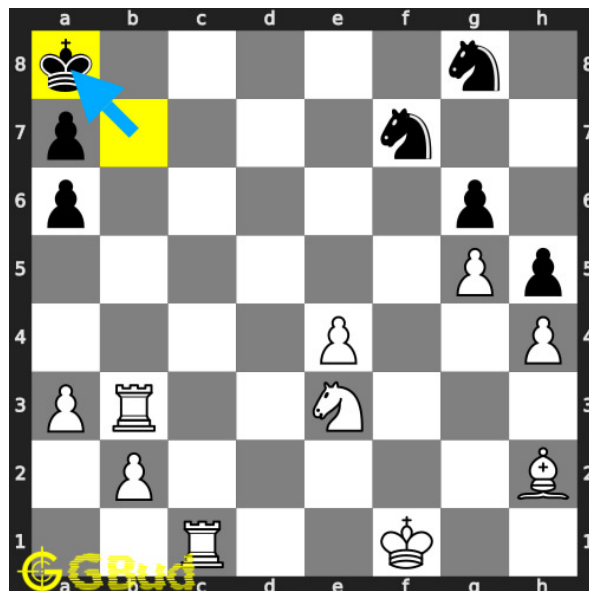


Figure 13: Ka8

opponent's **king** move to **a8** as this is the only free **square** available due to the block by friendly **pawns**.

Move 5 Move by white

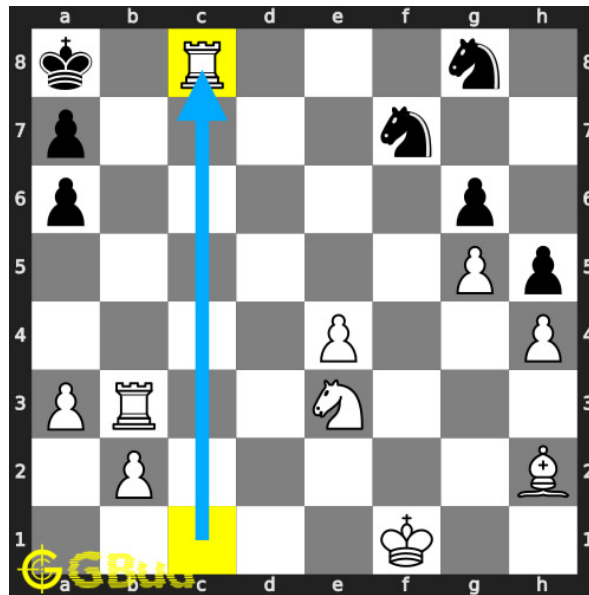


Figure 14: Rc8#

your **rook** in c file moves to c8 and **checkmate**. opponent's **king** is cornered and blocked by friendly **pawn**. this is how you can **mate** in 3 moves.

Right moves for the solution to the hard chess puzzle 0112

Based on the objective of the puzzle, you have to make the right moves. Following are the right moves

1. Rc1+, Rb3+, Rb8#
2. Rc1+, Rb3+, Rc8#

Explanation for the moves

1. Rc1+ - Your rook in first rank moves to c1 and gives check to opponent.
2. Kb7 - Opponent's king escapes from the check threat by moving to b7. It can't come to b8 or d file due to the attack from your other rook and bishop.
3. Rb3+ - Your rook in third rank gives next check.
4. Ka8 - Opponent's king move to a8 as this is the only free square available due to the block by friendly pawns.
5. Rb8# - Your rook in b file moves to b8 and checkmate. Opponent's king can't capture your rook since it is supported by bishop. This is how you can mate in 3 moves.

6. Rc8# - Your rook in c file moves to c8 and checkmate. Opponent's king is cornered and blocked by friendly pawn. This is how you can mate in 3 moves.
7. For right move - You are really pushing hard. It is appreciated.
8. For wrong move - You could have used both the rooks to have a mate in 3 moves. Do not stop trying

Categories of hard chess puzzle 0112

This hard chess puzzle falls in these categories.

1. [Hard chess puzzles](#)
2. [Mate in 3 puzzles in chess](#)
3. [Endgame puzzles in chess](#)
4. [Strategy puzzles in chess](#)
5. [Rook puzzles in chess](#)

hard chess puzzle 0112 chart



Figure 15: hard chess puzzle 112 chart 1



Figure 16: hard chess puzzle 112 chart 2



Figure 17: hard chess puzzle 112 chart 3



Figure 18: hard chess puzzle 112 chart 4

How to view the solution to hard chess puzzle 0112

To view the [solution to this puzzle](#), follow the steps given below

1. Go to the [puzzle page](#)
2. Click the solution button (Key as shown [below](#)) to view the solution



Figure 19: Click the solution button to view solutions @ <https://gbud.in/gyq26r3>

How to get help for moves in the hard chess puzzle 0112

To get help or the possible next moves in the puzzle, , follow the steps given below

1. Go to the [puzzle page](#)
2. Click the help button (exclamation mark as shown [below](#)) to get help or suggestion on next possible [move](#)



Figure 20: Click the help button to get help on next move @ <https://gbud.in/gyq26r3>



Figure 21: Solve more hard puzzles @ <https://gbud.in/chshdpz>



Figure 22: Solve other puzzles @ <https://gbud.in/chsgppz>

Play chess for free

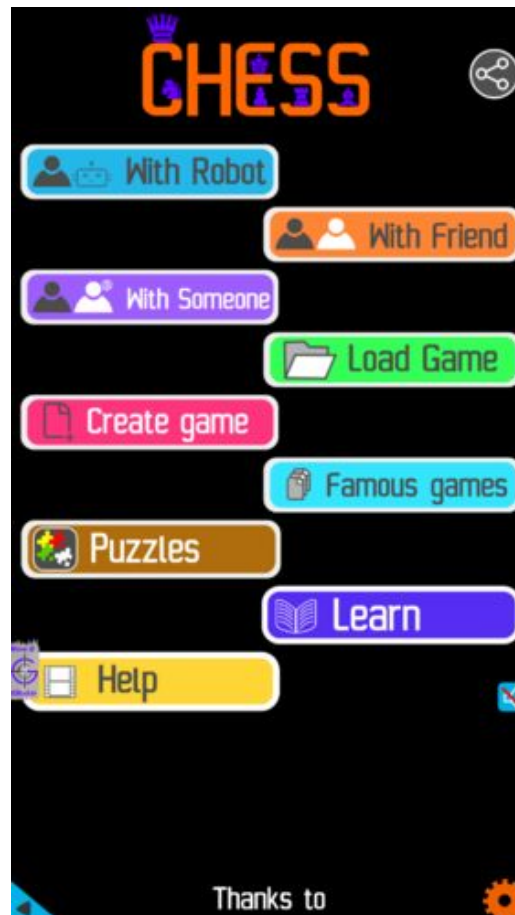


Figure 23: Play chess online for free. Solve puzzles and play with friends

Play chess for free at <https://gbud.in/chs>

We present you a platform to play chess online with friends for free. No need to install any app. You can play chess for free without registration or login.

Simple. You can do several chess related activities.

1. solve chess puzzles
2. learn about chess
3. play chess with computer
4. play chess with friend
5. create your own chess games

6. [fen viewer](#)
7. [fen editor](#)
8. [fen generator](#)
9. [pgn viewer](#)
10. [chess board editor](#)
11. [view famous chess games.](#)



Figure 24: Solve this puzzle online by scanning this QR code or go to the link below

<https://gbud.in/gyq26r3>

Read the latest article on Hard Chess puzzle # 0112 - Mate in 3 moves by scanning this QR code or click the link

Previous article : « [Hard Chess puzzle # 0111 - Mate in 3 moves](#)

Next article : [Hard chess puzzles](#) »

[Back to top](#)

[Contact Us](#)